

MOORSELE FLY-IN & OPEN-DOOR 2024

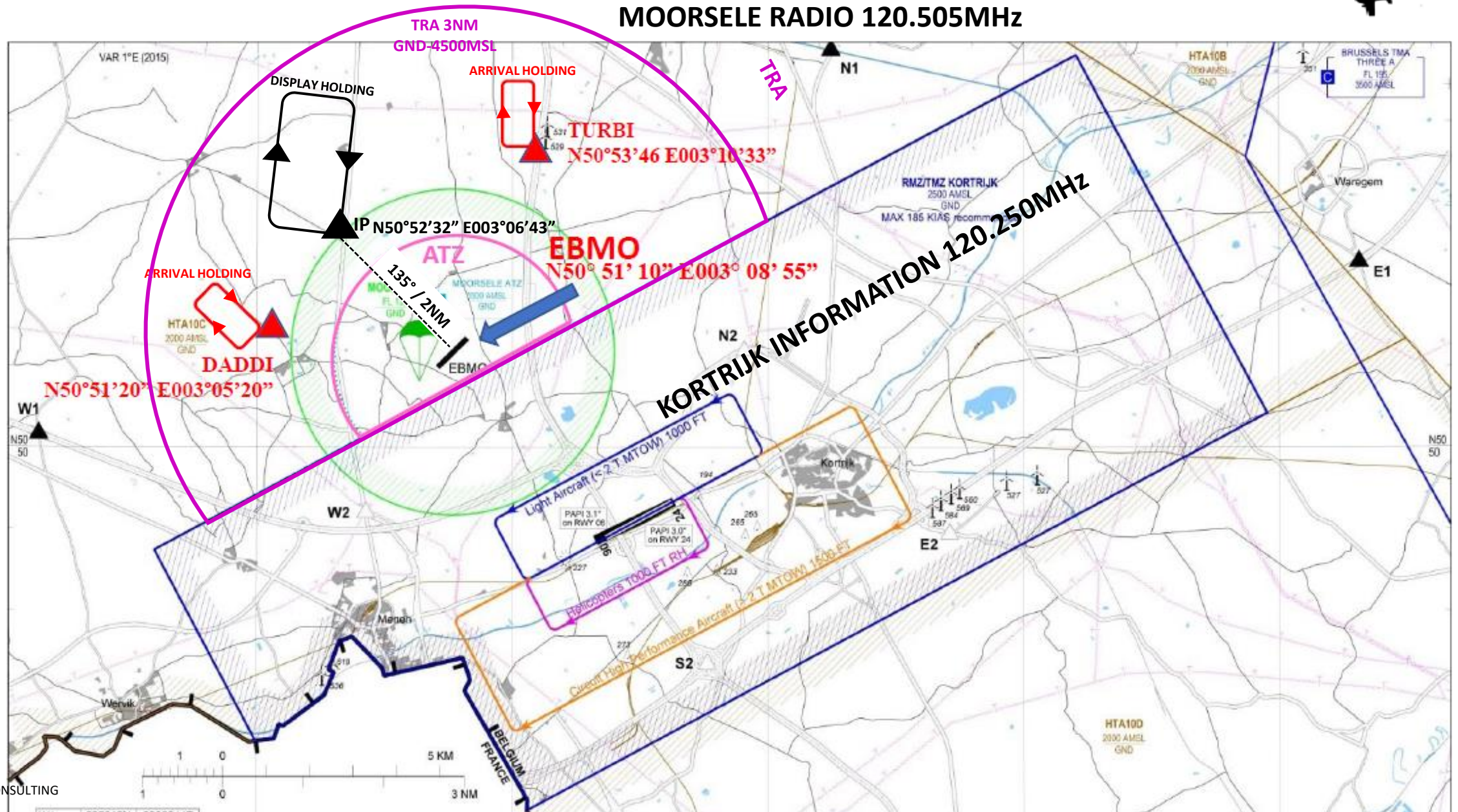
SATURDAY 06 & SUNDAY 07 JUL 09:00 – 20:00loc

VISITING AIRCRAFT INFO

ARRIVAL & DEPARTURE SLOTS

10:00Loc – 10:30Loc	11:00Loc – 11:30Loc	12:00Loc – 13:20Loc
15:00Loc – 15:10Loc	16:00Loc - 16:15Loc	17:00Loc – 17:15Loc
18:15Loc – 20:00Loc	Airfield closes 20:00Loc !	





MOORSELE FLY-IN TURBI ARRIVAL PROCEDURE



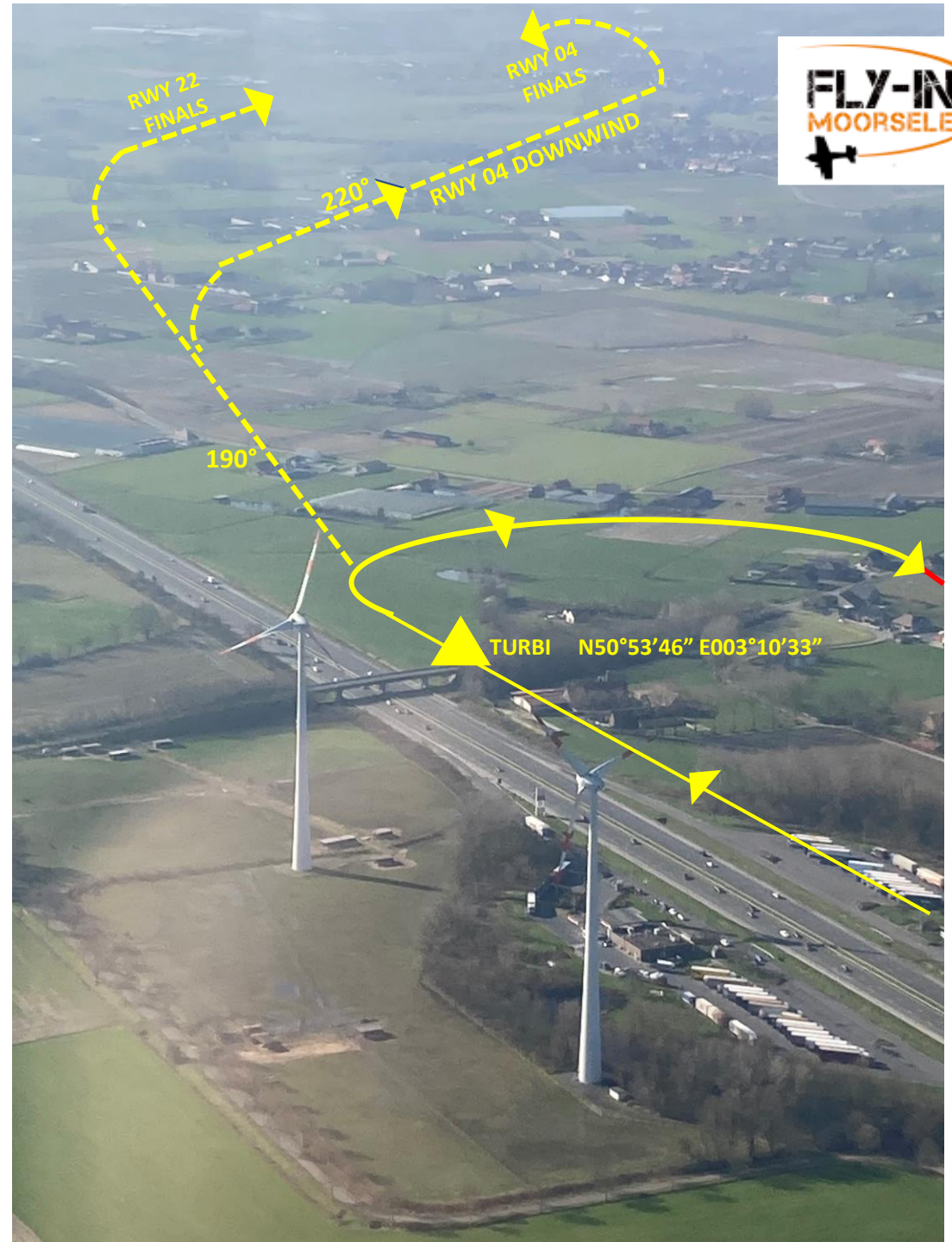
- PRIOR TO ENTERING TRA, ESTABLISH TWO WAY COMMUNICATIONS WITH ATS (MOORSELE RADIO ON 120.505 MHz);
- ON ATS REQUEST JOIN INTERSECTION 'TURBI' @ 1.200FT MSL OR ANOTHER ATS ASSIGNED ALTITUDE AND ENTER A RIGHT HAND HOLDING;

WITH RUNWAY 22 IN USE:

- FOLLOWING ATS INPUT, LEAVE TURBI INTERSECTION ON TRACK 190° DESCENDING TO 1.000FT MSL . AFTER APPROX 2NM TURN ON TRACK 220° FOR RUNWAY 22 FINALS;

WITH RUNWAY 04 IN USE:

- FOLLOWING ATS INPUT, LEAVE TURBI INTERSECTION ON TRACK 190° DESCENDING TO 1.000FT MSL . AFTER APPROX 1NM TURN ON TRACK 220° FOR RUNWAY 04 DOWNWIND;
- FOLLOW ATS INFO TOWARDS BASE AND FINAL TURNS.



MOORSELE FLY-IN

DADDI ARRIVAL PROCEDURE

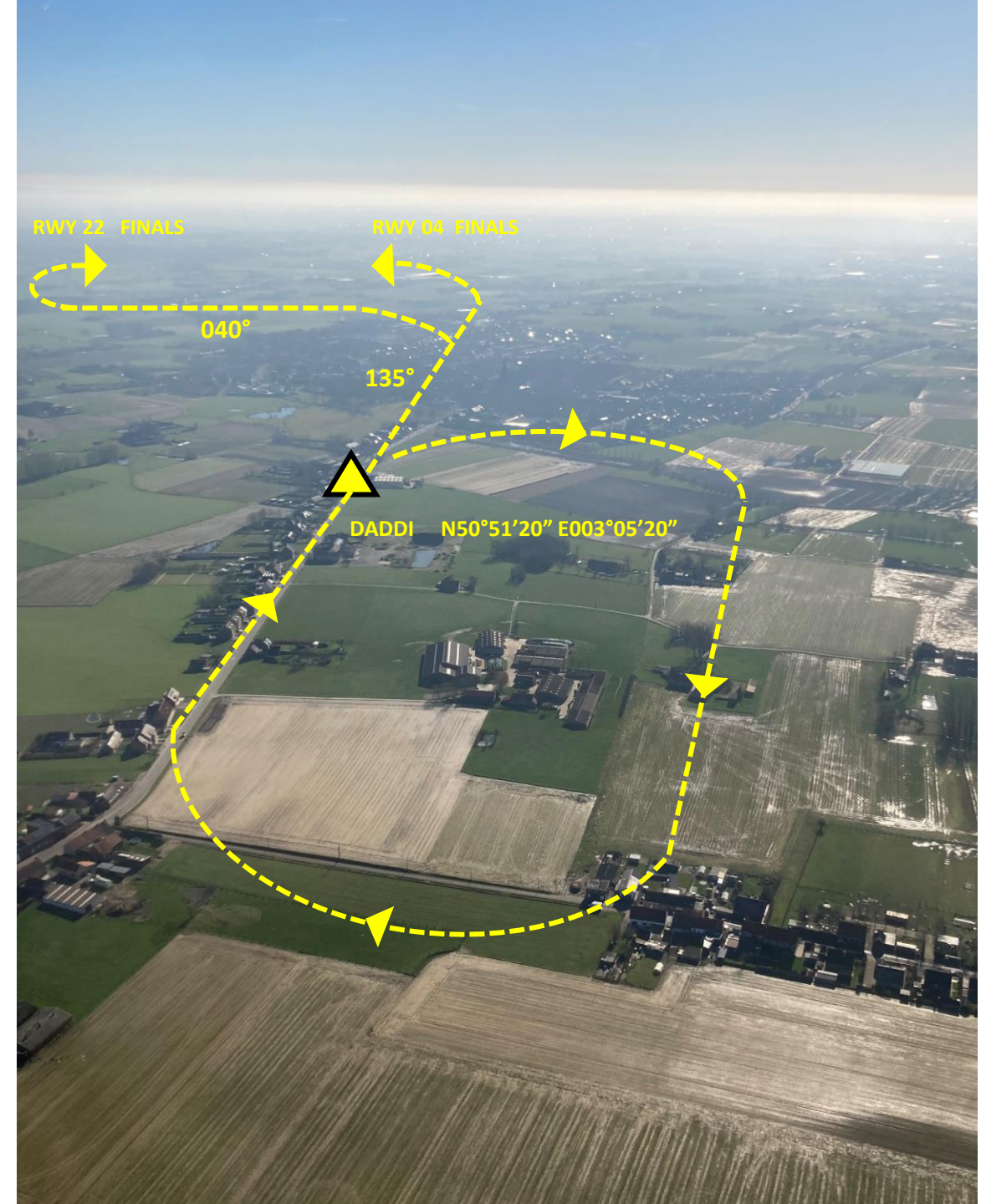
- PRIOR TO ENTERING TRA, ESTABLISH TWO WAY COMMUNICATIONS WITH ATS (MOORSELE RADIO ON 120.505 MHz);
- ON ATS REQUEST JOIN INTERSECTION 'DADDI' @ 1.200FT MSL OR ANOTHER ATS ASSIGNED ALTITUDE AND ENTER A RIGHT HAND HOLDING;

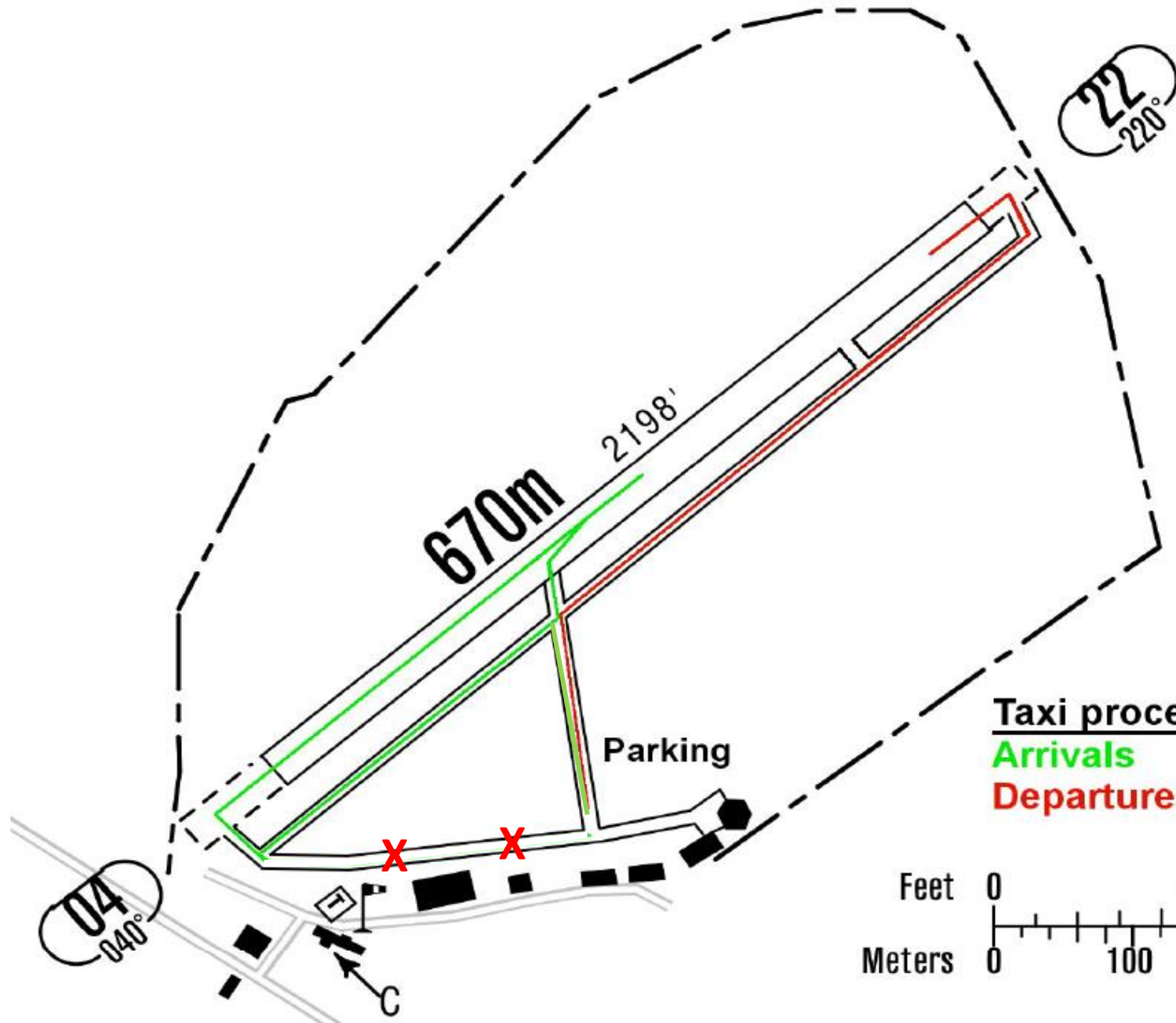
WITH RUNWAY 22 IN USE:

- FOLLOWING ATS INPUT, LEAVE DADDI INTERSECTION ON TRACK 135° DESCENDING TO 1.000FT MSL . AFTER 1NM PASSING THE SOUTHERN EDGE OF DADIZELE TOWN TURN ON TRACK 040° FOR RUNWAY 22 DOWNWIND;

WITH RUNWAY 04 IN USE:

- FOLLOWING ATS INPUT, LEAVE DADDI INTERSECTION ON TRACK 135° DESCENDING TO 1.000FT MSL . AFTER 1,5 NM ABEAM 'FLORALUX' SUPERMARKET TURN ON TRACK 040° ON RUNWAY 04 FINALS;
- FOLLOW ATS INFO TOWARDS BASE AND FINAL TURNS.

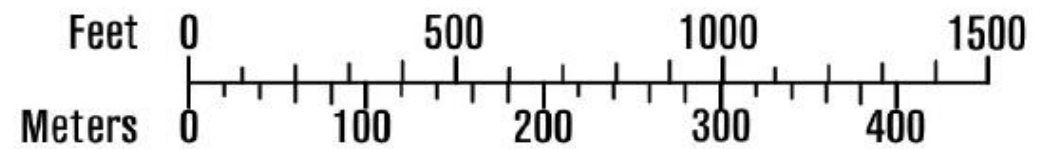


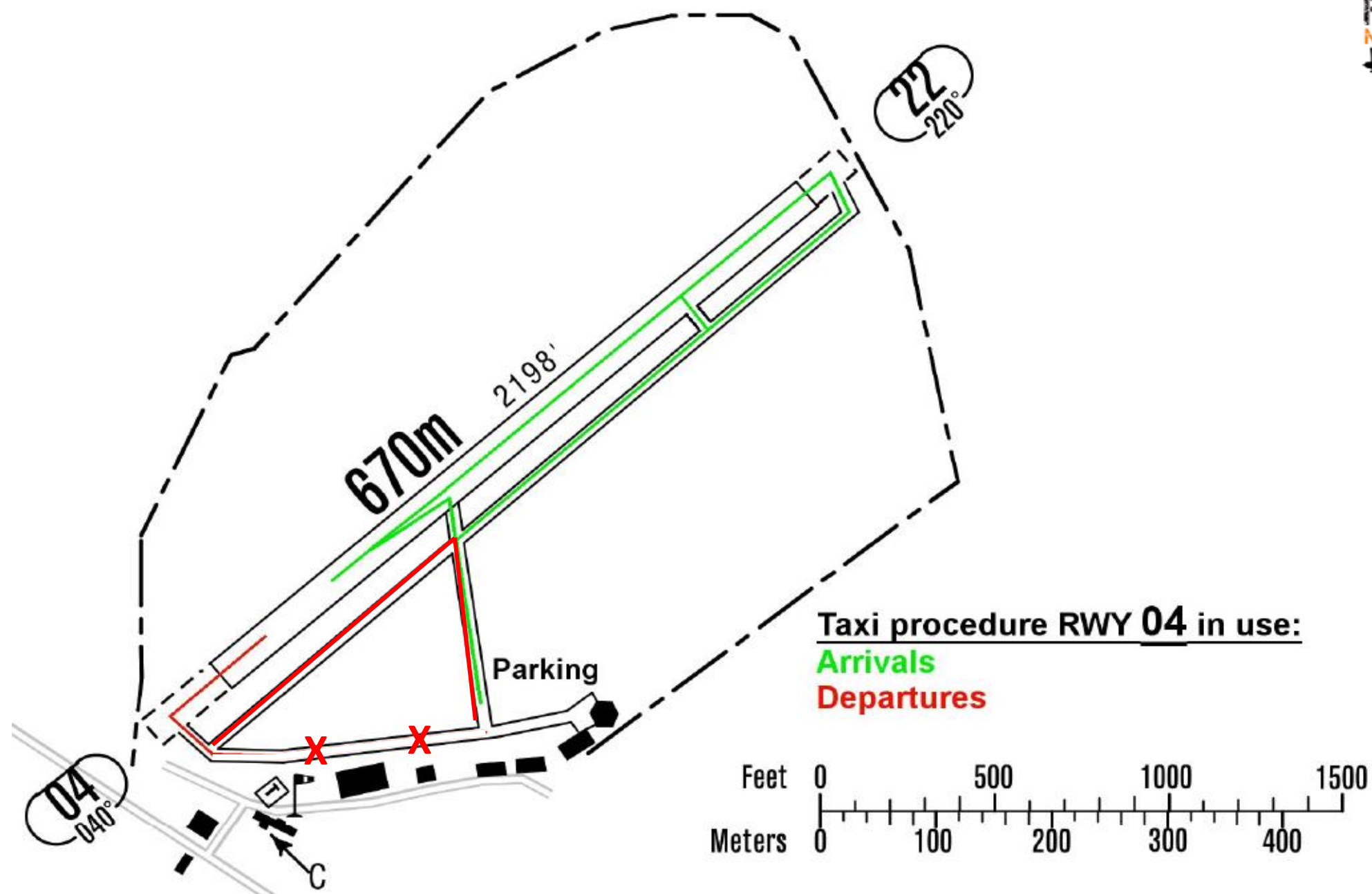


Taxi procedure RWY 22 in use:

Arrivals

Departures






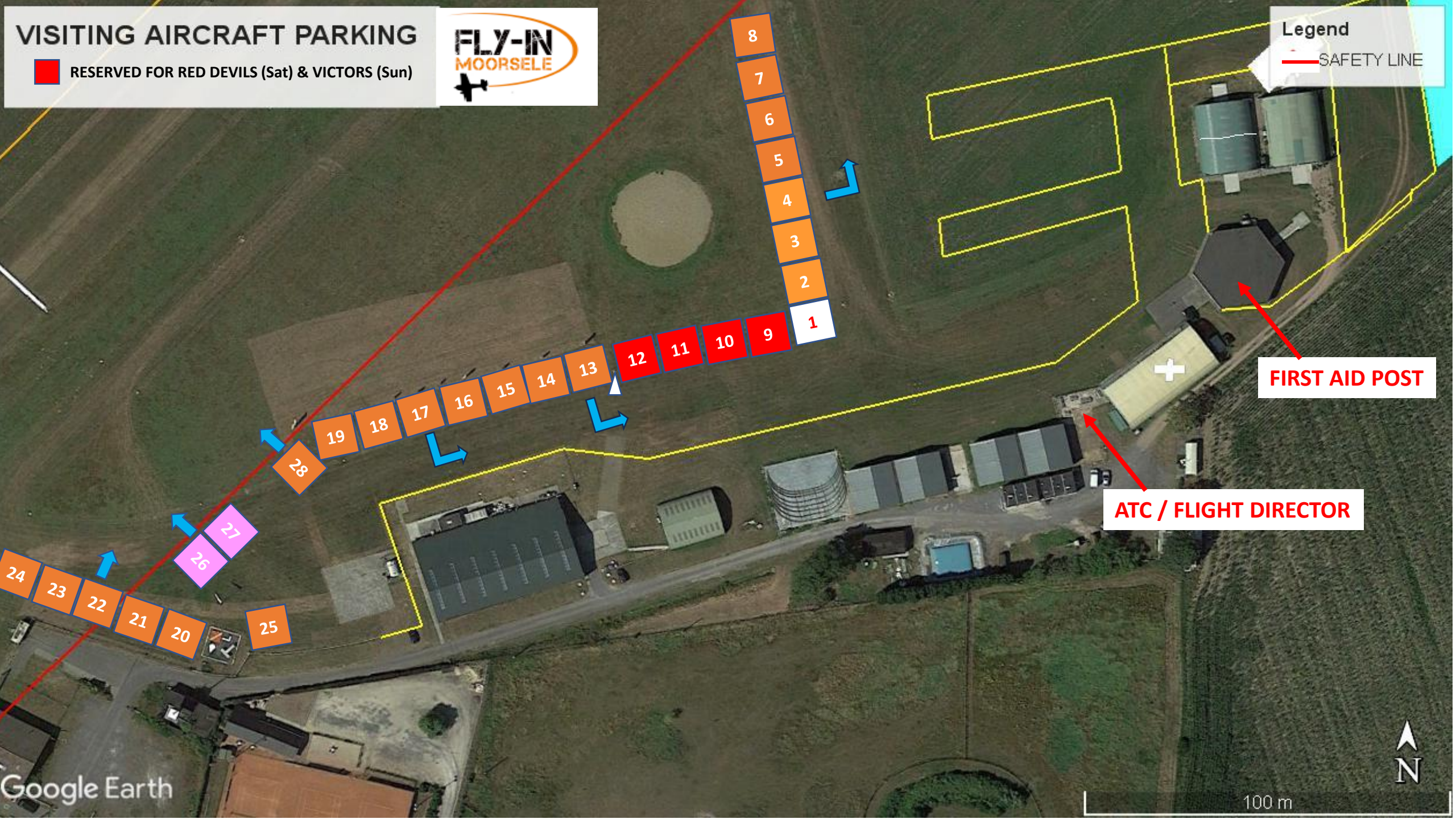
VISITING AIRCRAFT PARKING

 RESERVED FOR RED DEVILS (Sat) & VICTORS (Sun)



Legend

 SAFETY LINE



FIRST AID POST

ATC / FLIGHT DIRECTOR



100 m

APPLICABLE MARSHALLER SIGNS

No person shall guide an aircraft unless trained, qualified and approved by the appropriate authority to carry out the functions of a signaller. (ICAO Rules of the Air)

TAXI-IN AND PARKING SIGNS



COME FORWARD



TURN YOUR LEFT



TURN YOUR RIGHT



FOLLOW NEXT MARSHALLER



SLOW DOWN



STOP



BRAKES ON



CUT ENGINE



CHOCKS POSITIONED

APPLICABLE MARSHALLER SIGNS

START-UP AND TAXI-OUT SIGNS



STAND-BY POSITION



START-ENGINE



WHEEL CHOCKS REMOVED



BRAKES-OFF



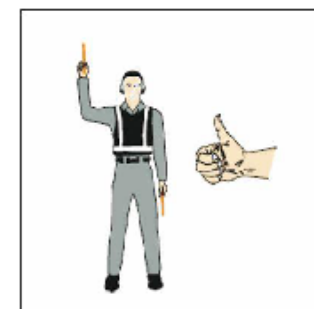
COME FORWARD



TURN YOUR RIGHT



MOVE TO NEXT MARSHALLER



YES or OK



NEGATIVE or NO